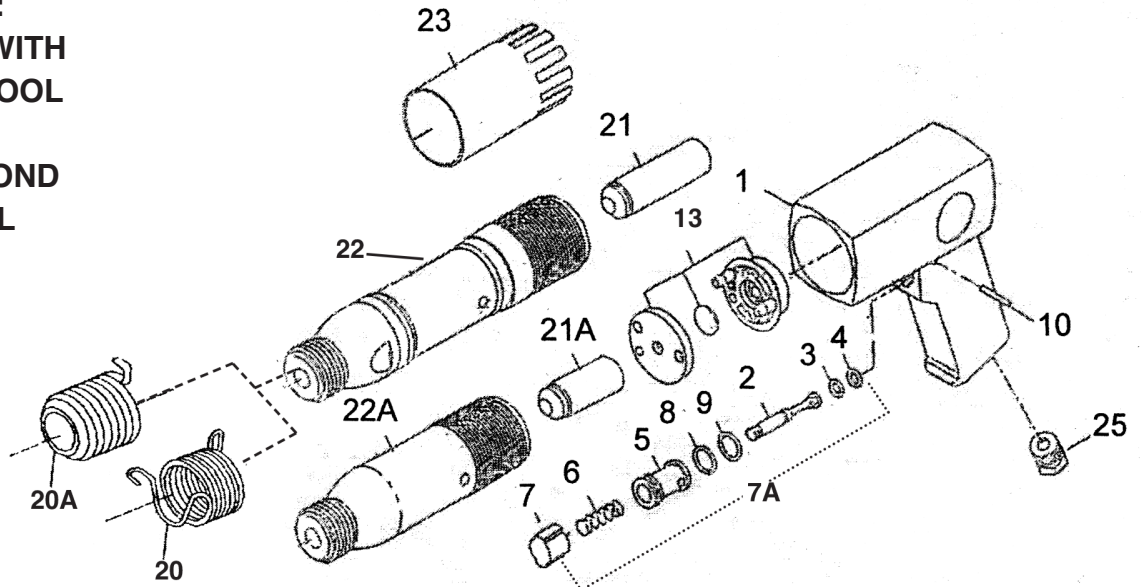


T-7111 AIR HAMMER T-7151 AIR HAMMER



**OILING INSTRUCTIONS:
OIL AFTER EACH USE WITH
A FEW DROPS OF AIRTOOL
OIL THROUGH THE AIR
INLET. RUN FOR 1 SECOND
TO COAT ALL INTERNAL
PARTS.**



USE 90 PSI MAXIMUM

REF #	PART #	DESCRIPTION	QTY	REF #	PART #	DESCRIPTION	QTY
1	715101A	HANDLE ASSEMBLY INCLUDES #1-10, 25	1	22A	711122	CYLINDER	1
2	715102	THROTTLE VALVE STEM	1	22	715122	CYLINDER	1
3	715103	O-RING	1	23	715123	DEFLECTOR (T-7151 ONLY)	1
4	715104	O-RING	1	25	715125	AIR INLET	1
5	715105	VALVE BUSHING	1	OPTIONAL ACCESSORIES FOR .401 AIR HAMMERS			
6	715106	VALVE SPRING	1				
7	715107	TRIGGER	1				
7A	715107A	TRIGGER ASSEMBLY #2-9	1				
8	715108	O-RING	1				
9	715109	O-RING	1				
10	715110	ROLL PIN	1				
13	715113A	VALVE ASSEMBLY	1				
20	T-5120	QUICK CHANGE SPRING	1				
20A	T-5210	BEEHIVE SPRING (OPTIONAL)	1				
21A	711121	PISTON	1	T-4030	TAPERED PUNCH		
21	715121	PISTON	1	T-4040	COLD CHISEL		
				T-4060	SPOT WELD BUSTER		
				T-4090	SPECIAL PANEL CUTTER		
				T-4100	DOUBLE BLADED CUTTER		
				T-4191	SCRAPER BLADE (LONG)		
				T-4220	SCRAPER BLADE 1-1/4"		
				T-7513	ALUMINUM SAFETY CK.		
				T-7514	QUICK CHANGE RETAINER		

505 N. Railroad Ave. 33435
P.O. Box 1117 33425
Boynton Beach, FL

SEE MORE OF OUR CATALOG AT
www.taylorpneumatic.com

AUGUST 2020 / ALL RIGHTS RESERVED / COPYRIGHT 2020

Ph. (561)732-1111
Fax. (561)731-4412
Toll Free (800) 805-8665